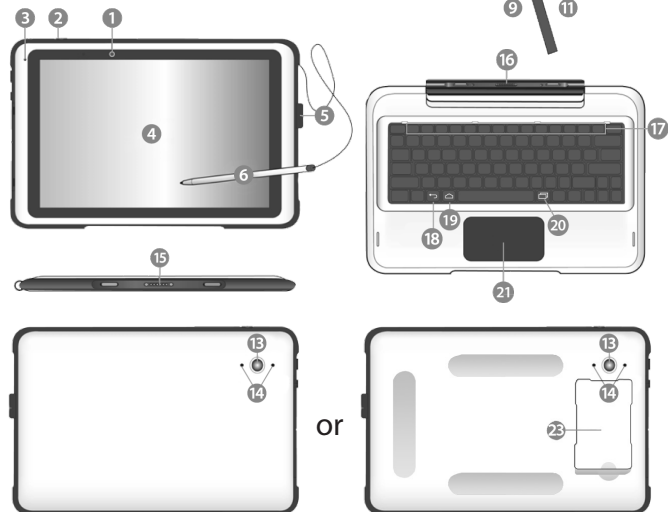


## ABOUT YOUR CASEBOOK 3



- |                  |                                   |                            |
|------------------|-----------------------------------|----------------------------|
| 1 Front camera   | 9 Micro SD card slot              | 17 Function keys (Android) |
| 2 Power button   | 10 Protective cover for I/O ports | 18 "Back" key (Android)    |
| 3 Microphone     | 11 Micro HDMI port                | 19 "Home" key (Android)    |
| 4 Touchscreen    | 12 Headphone jack 3.5mm           | 20 "Recent" key (Android)  |
| 5 Stylus Holder  | 13 Rear camera                    | 21 Touchpad                |
| 6 Stylus         | 14 LEDs                           | 22 SIM card slot           |
| 7 Volume up/down | 15 Docking connector              | 23 Smart card holder       |
| 8 Micro USB port | 16 Docking connector              |                            |

This device is not a toy. Make sure that the user knows how to handle the device, as well as the mains cable, safely. Incorrect use may result in injury. To download this product's user guide, please go to the product page on our website [www.TETRATAB.com](http://www.TETRATAB.com).

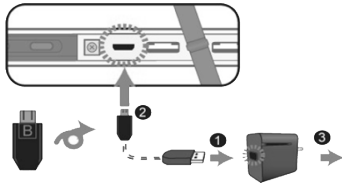
# Casebook 3

## QUICKSTART GUIDE

 TETRATAB

## CHARGING YOUR CASEBOOK 3

We strongly recommend that you charge the battery fully before you turn on your Casebook 3 for the first time. To charge your Casebook 3:



- Plug the USB head of the cable into the adapter.
- Plug the micro-USB head of the cable - with the side marked with "B" or an icon facing down - into the micro-USB port on your tablet.
- Plug the adapter into a wall-socket.

### Note:

- Never use a damaged charger, damaged power cords or loose electrical sockets. Unsecured connections can cause electric shock or fire.
- Use only the power adapter that comes with your device. Using a different power adapter may damage your device.
- Connecting the charger improperly may cause serious damage to the device. Any damage caused by misuse is not covered by the warranty.



Warning: Only use the bundled power adapter. Unplug your device from the power supply once it is fully charged. Casebook 3 devices are not designed to be left connected to the power supply for long periods of time.

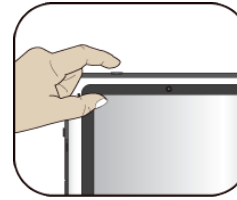
## INSERTING YOUR SIM CARD

To use a SIM card, insert the card as shown in the SIM slot beneath the I/O port cover.

Ensure that your SIM is oriented correctly to prevent damage to the device.



## TURNING YOUR CASEBOOK 3 ON OR OFF

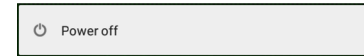


To turn on your equipment, press the power button (normally 1 to 2 seconds) until you see the display turned on.

Important: PLEASE READ THE USER MANUAL BEFORE STARTING TO USE YOUR DEVICE. This can be found on the product page on our website [www.TETRATAB.com](http://www.TETRATAB.com)

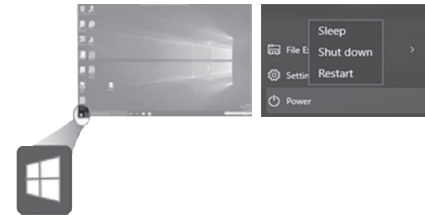
To turn off your device (Android):

- Press and hold the "Power lock" button
- The "power off" confirmation menu appears. Touch the menu to turn off the power (by touching anywhere else on the screen, you will continue using the tablet).
- Your tablet will start turning off itself.



To turn off your device (Windows):

- Tap the Windows icon in the left corner of the Desktop.
- In the start menu tap on the "Power option" and select Shut Down from the power option menu as below.



*This Quick Guide is for reference only and it is subject to change without prior notice. For the latest updates and more information please visit [www.TETRATAB.com](http://www.TETRATAB.com).*